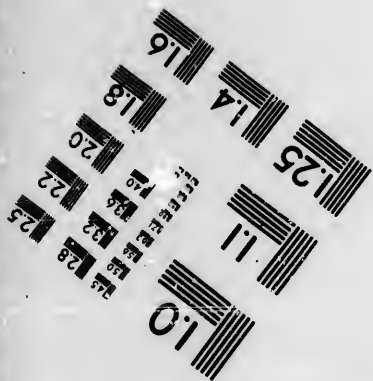
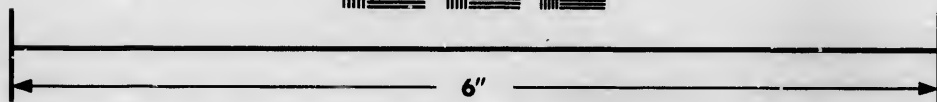
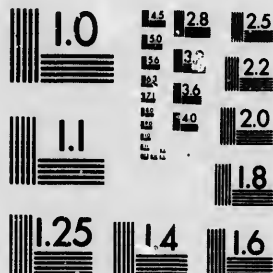


**IMAGE EVALUATION
TEST TARGET (MT-3)**



**Photographic
Sciences
Corporation**

23 WEST MAIN STREET
WEBSTER, N.Y. 14580
(716) 872-4503

1.8
2.0
2.2
2.5
2.8
3.2
3.6
4.0

**CIHM/ICMH
Microfiche
Series.**

**CIHM/ICMH
Collection de
microfiches.**



Canadian Institute for Historical Microreproductions / Institut canadien de microreproductions historiques

1.8
2.0
2.2
2.5
2.8
3.2
3.6
4.0

© 1986

Technical and Bibliographic Notes/Notes techniques et bibliographiques

The Institute has attempted to obtain the best original copy available for filming. Features of this copy which may be bibliographically unique, which may alter any of the images in the reproduction, or which may significantly change the usual method of filming, are checked below.

L'institut a microfilmé le meilleur exemplaire qu'il lui a été possible de se procurer. Les détails de cet exemplaire qui sont peut-être uniques du point de vue bibliographique, qui peuvent modifier une image reproduite, ou qui peuvent exiger une modification dans la méthode normale de filmage sont indiqués ci-dessous.

- Coloured covers/
Couverture de couleur
- Covers damaged/
Couverture endommagée
- Covers restored and/or laminated/
Couverture restaurée et/ou pelliculée
- Cover title missing/
Le titre de couverture manque
- Coloured maps/
Cartes géographiques en couleur
- Coloured ink (i.e. other than blue or black)/
Encre de couleur (i.e. autre que bleue ou noire)
- Coloured plates and/or illustrations/
Planches et/ou illustrations en couleur
- Bound with other material/
Relié avec d'autres documents
- Tight binding may cause shadows or distortion
along interior margin/
La reliure serrée peut causer de l'ombre ou de la
distorsion le long de la marge intérieure
- Blank leaves added during restoration may
appear within the text. Whenever possible, these
have been omitted from filming/
Il se peut que certaines pages blanches ajoutées
lors d'une restauration apparaissent dans le texte,
mais, lorsque cela était possible, ces pages n'ont
pas été filmées.

- Coloured pages/
Pages de couleur
- Pages damaged/
Pages endommagées
- Pages restored and/or laminated/
Pages restaurées et/ou pelliculées
- Pages discoloured, stained or foxed/
Pages décolorées, tachetées ou piquées
- Pages detached/
Pages détachées
- Showthrough/
Transparence
- Quality of print varies/
Qualité inégale de l'impression
- Includes supplementary material/
Comprend du matériel supplémentaire
- Only edition available/
Seule édition disponible
- Pages wholly or partially obscured by errata
slips, tissues, etc., have been refilmed to
ensure the best possible image/
Les pages totalement ou partiellement
obscurcies par un feuillet d'errata, une pelure,
etc., ont été filmées à nouveau de façon à
obtenir la meilleure image possible.

Additional comments:/ [Printed ephemera] [4] p.
Commentaires supplémentaires:

This item is filmed at the reduction ratio checked below/
Ce document est filmé au taux de réduction indiqué ci-dessous.

10X	14X	18X	22X	26X	30X
<input type="checkbox"/>	<input type="checkbox"/>	<input type="checkbox"/>	<input checked="" type="checkbox"/>	<input type="checkbox"/>	<input type="checkbox"/>
12X	16X	20X	24X	28X	32X

The copy filmed here has been reproduced thanks to the generosity of:

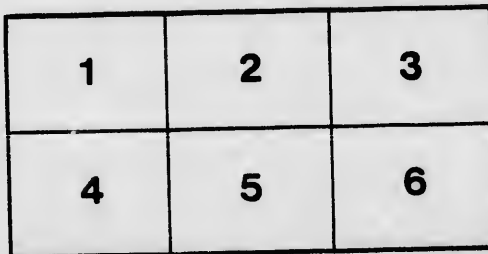
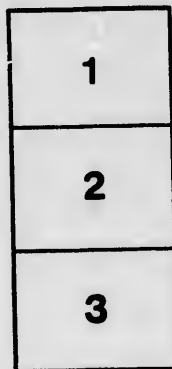
New Brunswick Museum
Saint John

The images appearing here are the best quality possible considering the condition and legibility of the original copy and in keeping with the filming contract specifications.

Original copies in printed paper covers are filmed beginning with the front cover and ending on the last page with a printed or illustrated impression, or the back cover when appropriate. All other original copies are filmed beginning on the first page with a printed or illustrated impression, and ending on the last page with a printed or illustrated impression.

The last recorded frame on each microfiche shall contain the symbol \rightarrow (meaning "CONTINUED"), or the symbol ∇ (meaning "END"), whichever applies.

Maps, plates, charts, etc., may be filmed at different reduction ratios. Those too large to be entirely included in one exposure are filmed beginning in the upper left hand corner, left to right and top to bottom, as many frames as required. The following diagrams illustrate the method:



L'exemplaire filmé fut reproduit grâce à la générosité de:

New Brunswick Museum
Saint John

Les images suivantes ont été reproduites avec le plus grand soin, compte tenu de la condition et de la netteté de l'exemplaire filmé, et en conformité avec les conditions du contrat de filmage.

Les exemplaires originaux dont la couverture en papier est imprimée sont filmés en commençant par le premier plat et en terminant soit par la dernière page qui comporte une empreinte d'impression ou d'illustration, soit par le second plat, selon le cas. Tous les autres exemplaires originaux sont filmés en commençant par la première page qui comporte une empreinte d'impression ou d'illustration et en terminant par la dernière page qui comporte une telle empreinte.

Un des symboles suivants apparaîtra sur la dernière image de chaque microfiche, selon le cas: le symbole \rightarrow signifie "A SUIVRE", le symbole ∇ signifie "FIN".

Les cartes, planches, tableaux, etc., peuvent être filmés à des taux de réduction différents. Lorsque le document est trop grand pour être reproduit en un seul cliché, il est filmé à partir de l'angle supérieur gauche, de gauche à droite, et de haut en bas, en prenant le nombre d'images nécessaire. Les diagrammes suivants illustrent la méthode.

rrata
to

pelure,
n à

32X

Art Union



OF

CANADA

= Prospectus for 1889 =

Art Union Committee.

HON. G. W. ALLAN, Chairman.

A. D. PATTERSON.

H. PERRE.

M. MATTHEWS.

J. MASSEY.

J. PAYNE.

J. H. MASON.

W. REVELL.

J. BONNICK.

J. HENDERSON.



SKETCHES ARE CONSTANTLY ON VIEW AT

MESSRS. GAGEN & FRASER'S, 79 KING ST. W.

Where Tickets can be obtained.





ART UNION OF CANADA.

—→ SEASON 1889 ←—



THE Committee has much pleasure in bringing before the public its Prospectus for the current season's Art Union, and begs to inform its patrons that through a combination of events, it was decided to allow an interval—consisting of the year 1888—to take place in its usual annual drawing. One important reason for this was the difficulty experienced in obtaining a sufficient supply of sketches of quality and novelty equal to the requirements of the Art Union Portfolio. It is now confidently hoped that the extra time thus suffered to elapse has enabled the artist members to accumulate material and variety which will enlist renewed interest and attract a large roll of members to join the Union, each one of whom will participate in the annual drawing and distribution of prizes during the annual exhibition in Toronto in May next.

PLAN.

EVERY SUBSCRIBER OF FIVE DOLLARS will receive a ticket with a coupon attached, which is exchangeable for an original sketch, to be selected from the Portfolios of the Art Union of the value of \$5.00, the artists furnishing these sketches (in oil, water color or monochrome) to the Portfolio at the reduced price of \$3.00, the surplus of \$2.00 being devoted to form a Prize Fund which will be equitably distributed by lot to the subscribers in the form of Works of Art by members of the Ontario Society of Artists, the amount of each prize being applied in the purchase of the same at the catalogue price at the Annual Exhibition of the Society in May. Also four single admission tickets and a catalogue of the Exhibition.

N.B.—All outstanding Coupons will be redeemed by the Society, the holders having the same privileges as new subscribers.

Non-Coupon Tickets.

Every subscriber of Two Dollars will receive a ticket without a coupon, which shall entitle him to one chance of a prize at the annual drawing and a copy of the catalogue of the Exhibition.

Honorary Members.

Permanent annual subscribers of four tickets (value, \$20) are eligible for election as Honorary members, as are also gentlemen who will guarantee a permanent annual subscription of seven tickets (value, \$35) by themselves or their friends.

The annual subscription for one ticket is five dollars.

Election of the Committee.

An Annual Meeting will be called of the whole of the Art Union members, who will have a vote for each ticket purchased, and at this meeting the Managing Committee, consisting of five lay members, will be elected to act with five artist members elected by the Society.

Ontario Society of Artists.

INSTITUTED 1872.

Honorary Patrons.

THE MARQUIS OF LORNE
HER ROYAL HIGHNESS THE PRINCESS LOUISE
THE EARL OF DUFFERIN
THE MARQUIS OF LANSDOWNE
THE HON. JOHN BEVERLEY ROBINSON

HON. G. W. ALLAN,
President.

W. REVELL,
Vice-Pres. and Treas.

M. MATTHEWS,
Secretary.

Members.

PAINTERS.

R. Baigent, Toronto.
W. Brynner, Ottawa.
Mrs. D. Blackwell, Dundas.
W. D. Blatchley, Toronto.
G. Bruneuch, Toronto.
A. P. Coleman, Cobourg.
Arthur Cox, Toronto.
Wm. Cruickshank, Toronto.
Forshaw Day, Kingston.
F. C. V. Ede, Toronto.
J. C. Forbes, Toronto.
D. Fowler, Amherst Island.
J. W. L. Forster, Toronto.
F. L. Foster, Toronto.
R. F. Gagen, Toronto.
M. Hannaford, Toronto.
Julius Humme, Toronto.
O. R. Jacobi, Montreal.

W. L. Judson, London.
H. Martin, Toronto.
M. Matthews, Toronto.
J. C. Miles, St. John, N. B.
C. E. Moss, Ottawa.
L. R. O'Brien, Toronto.
H. Perre, Toronto.
A. D. Patterson, Toronto.
J. C. Pinhey, Ottawa.
Paul Peel, London.
Wm. Reford, Toronto.
Wm. Revell, Toronto.
G. A. Reid, Toronto.
Mrs. G. A. Reid, Toronto.
F. M. Bell-Smith, London.
E. S. Shrapnel, Whitby.
W. A. Sherwood, Toronto.
Miss. S. Tully, Toronto.
F. A. Verner, London, Eng.
Miss. Westmacott, Toronto.

H. R. Watson, Doon.
P. G. Wickson, Paris.

ENGRAVERS.

J. T. Rolph, Toronto.
Mrs. J. Payne, Toronto.

ARCHITECTS.

E. Burke, Toronto.
D. B. Dick, Toronto.
J. G. Howard, Toronto.
H. Langley, Toronto.
Jas. Smith, Toronto.

SCULPTOR.

Hamilton McCarthy.

Honorary Members.

Hon. G. W. Allan.
D. W. Alexander.
Hon. E. Blake.
C. Bunting.
J. Bonnick.
J. T. M. Burnside.
R. K. Burgess.
L. T. Barclay.
J. L. Baikie.
Hon. W. Cayley.
C. Carpmael.
Wm. Christie.
Judge Clark.
A. R. Creelman.
Mrs. Alex. Cameron.
Earl of Dufferin.
Judge Dartnell.
G. A. Drummond.
A. V. Delaporte.
Thos. Eakins.
Sandford Fleming
A. T. Fulton.
John Foy.
Colonei Gzowski.
Robt. Gilmour.

Allan Gilmour.
Mrs. A. Gooderham.
Sir W. P. Howland.
W. H. Howland.
Dr. J. Hall.
John Henderson.
Dr. Hodgins.
Robt. Hay, M.P.
Jas. Hughes.
A. McLein Howard.
Wm. Ince.
Alex. Jardine.
John Kay.
John Leys.
Hon. O. Mowat.
J. H. Mason.
John Massey.
Judge Macpherson.
Sir John A. Macdonald.
Jas. MacLennan.
John Macdonald.
Wm. Macdonald.
J. Grant Macdonald.
W. S. Lee.
C. H. Nelson.

John Payne.
Chas. Pollock.
N. F. Paterson.
J. Ross Robertson.
Christopher Robinson.
W. S. Robinson.
W. A. Sims.
G. M. Ross.
F. B. Ross.
A. G. Ramsay.
Goldwin Smith.
J. Spooner.
F. J. Stewart.
W. Scott.
Philip Todd.
Sir Leonard Tilley.
R. J. Tackaberry.
Geo. Virtue.
R. T. Walkem.
Dr. D. Wilson.
Fred'k Wyld.
Frank West.
F. W. Walker.
Mrs. Norman Walker.
Mrs. J. S. Walker.

